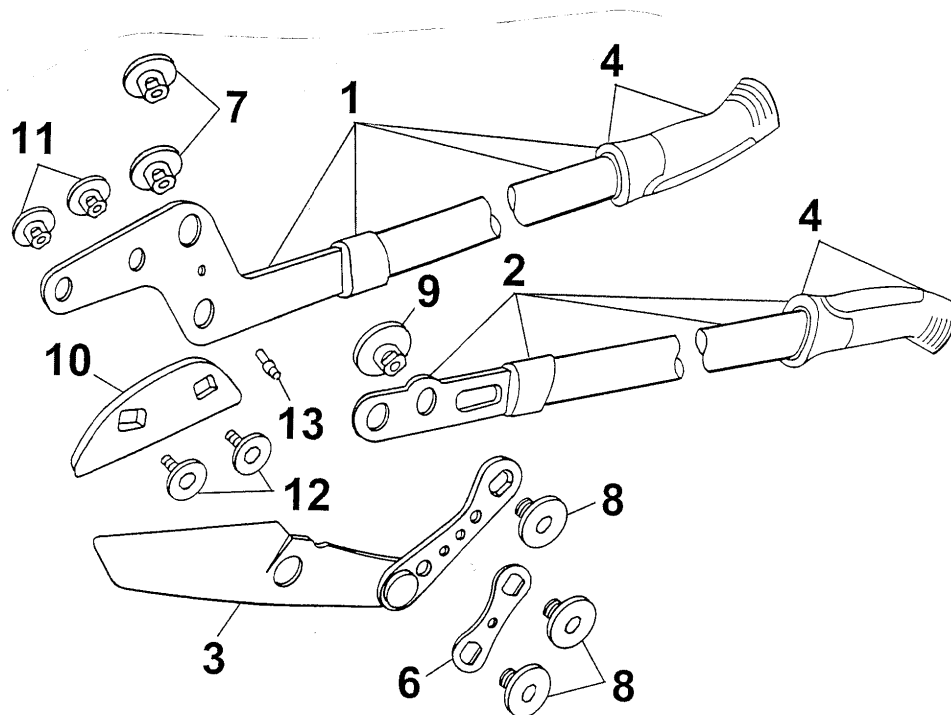


Hebel-Astscherer / lever lopper
Gerät / Model RS 830 7276 000
OR 83 7276 001/F



D11

Gerät / Model RS 830 7276 000, OR 83 7276 001 / F

| Bild-Nr. / Ref. No. | Best.-Nr. / Part No. | Bezeichnung | Description |
|------------------------|-------------------------|----------------------------|------------------------------|
| -- | | Hebel-beschichtet | anvil lever, coated |
| -- | | Manschette | collar |
| -- | | Griffrohr 580 mm eloxiert | griptube 580 mm, coated |
| 1 | 7276 012 | Hebel kpl. | anvil lever complete |
| -- | | Angel-beschichtet | tang, coated |
| -- | | Manschette | collar |
| -- | | Griffrohr 580 mm eloxiert | griptube 580 mm, coated |
| 2 | 7276 013 | Angel kpl. | knife tang complete |
| -- | | Messer-beschichtet | blade, coated |
| -- | | Koppel-rot | connecting-rod, red |
| -- | | Nietbolzen | bolt |
| 3 | 7276 011 | Messer mit Koppel kpl. | blade with connecting-rod |
| 4* | 7275 101 | Basisgriff (2 St.) | grip (2 pieces) |
| 4* | 7275 102 | Griffkappe (2 St.) | cap (2 pieces) |
| 6 | 7276 200 | Lasche-rot | shackle, red |
| 13 | 7254 208 | Bolzen | bolt |
| 7* | 7254 207 | Gelenkhülse M 8 (2 St.) | joint adapter M 8 (2 pieces) |
| 8* | 7252 201 | Schraube M 8 (3 St.) | screw M 8 (3 pieces) |
| 9* | 7254 206 | Variehülse | vario case |
| 11* | 7270 200 | Ambosshülse (2 St.) | anvil joint screw (2 pieces) |
| 12* | 7270 201 | Amboss-Schraube M6 (2 St.) | screw M 6 (2 pieces) |
| 10 | 7271 060 | Amboss RS-EA 1 | anvil RS-EA |
| *** | 7276 025 | Schraubensatz kompl. | screw set compl. |

** Basisgriff und Griffkappe nur zusammen montierbar !

* grip and cap only together installable !

D12